



Casa  
Fernando  
Pessoa



## Relaxed Sessions

### Casa Fernando Pessoa

Long-term exhibition

10 am. to 1 pm.

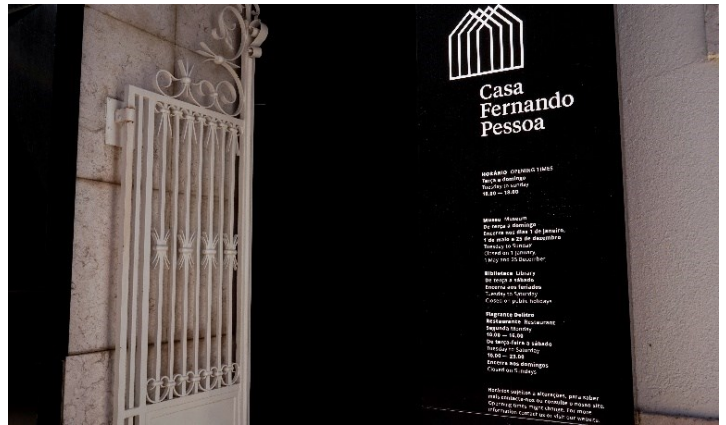
In the Relaxed Sessions, the visit to the long-term exhibition of Casa Fernando Pessoa takes place in a more relaxed and welcoming atmosphere and with more tolerance regarding movement and noise in the exhibition rooms. They can also involve small adjustments in the exhibition (lighting, sound, etc.) and in welcoming the members, to better suit their needs.

They are addressed to all individuals and families who prefer or enjoy a more relaxed atmosphere in a cultural venue, reducing anxiety levels and making the experience more enjoyable.

For example:

- people on the autism spectrum;
- people with intellectual disabilities;
- children with attention deficit disorder;
- people with Down syndrome;
- people with Tourette's syndrome;
- seniors in early stages of dementia;
- people with sensory, social, or communication impairments;
- families with young children.

**Casa Fernando Pessoa**  
Main Entrance  
Rua Coelho da Rocha, 18



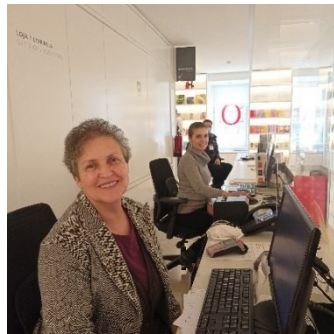
Upon arrival we must go through the tunnel and turn right. On the floor there are raised marks, it is the podotactile floor that runs through all areas of the building



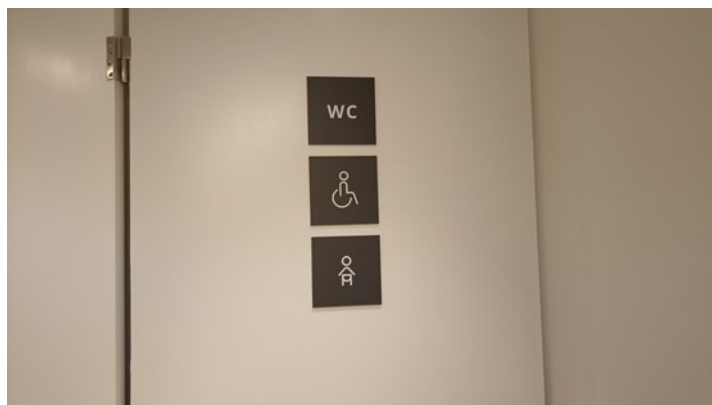
We find an automatically opening door. We turn left and open the door that leads to the ticket office, where we will buy the tickets.



We are going to visit the Casa Fernando Pessoa's exhibition. The people at the ticket office and the security officer will ask us to leave our backpacks and coats in the lockers on level -1. We can take the stairs or the elevator.



If we need to go to the toilet, we should go down to level -1. The men's and women's room and the adapted toilet are in the same place. We should look for this symbol.



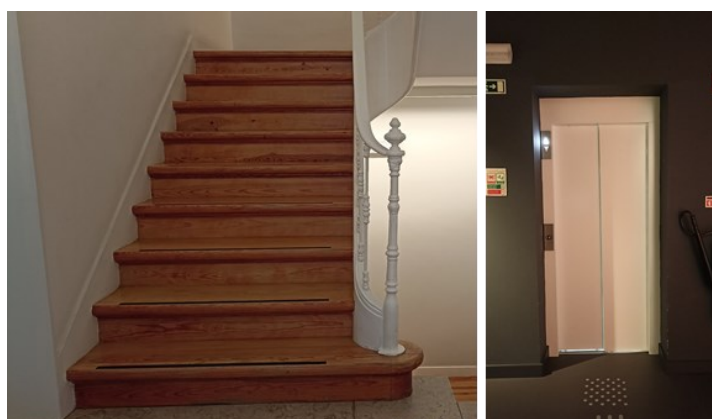
During the visit, if we are bothered by noise, lights, or something else, we can cover our ears or hold hands with those accompanying us. At any time, we can leave to a quieter place and re-enter the room / exhibition.



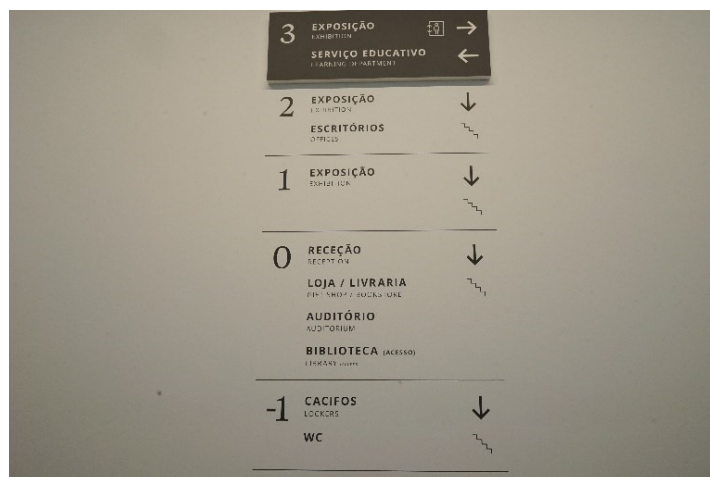
If there is an emergency, we should follow the directions given by the people working at Casa Fernando Pessoa and the signage.



To begin the tour, we must go up to the 3rd floor. We can go up the stairs (6 flights) or by elevator.



On the 3rd Floor we find a sign that tells us where we are.



We are greeted by a person working at Casa Fernando Pessoa identified by yellow vest, a coloured ribbon and name tag. In winter they can also wear a red coat. They are at the museum to help and to answer questions.



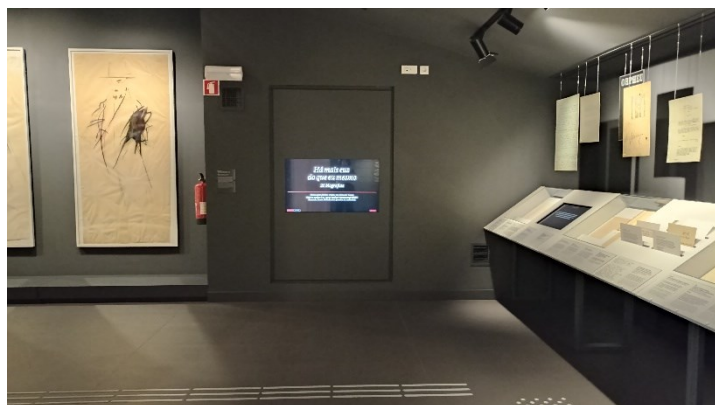
Arriving by elevator or by the stairs, what we see first is the typewriter in a display case. On the floor we see letters lit up in white, names appearing and disappearing. At the same time, the sound of a typewriter is heard.



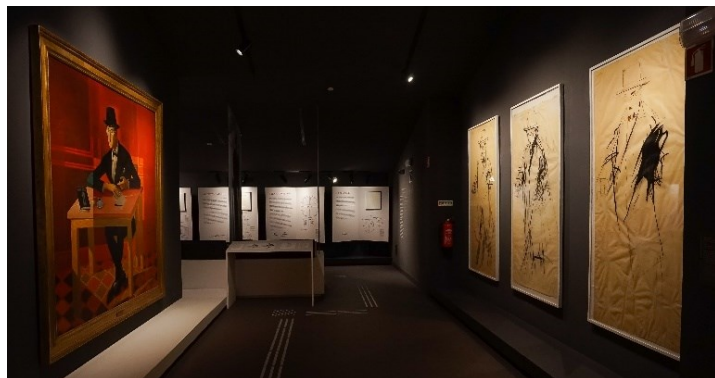
Starting the tour from the right, we see several books and manuscripts inside the displays.



At the back of the room there is a touch screen.



Moving on, we see a corridor with paintings on either side. These paintings may be appealing but they are not to be touched.



On the table at the end of that corridor, there are reproductions of the same paintings. This is the place where you can touch.



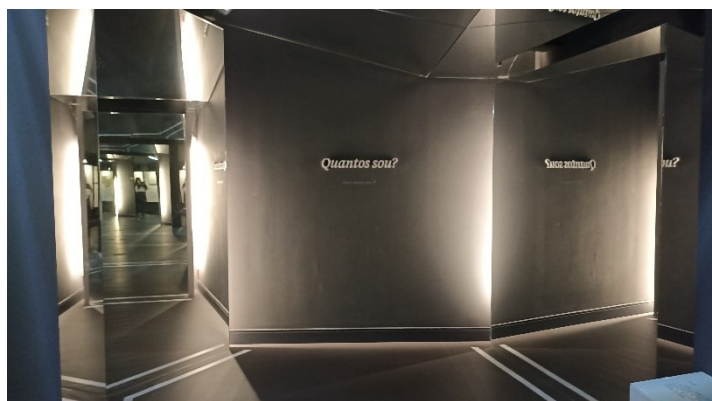
Next, we find 3 couches that we can sit on. There are adjacent touch screens and headphones that we can use to listen to poems by Fernando Pessoa and his heteronyms (characters created by Pessoa).



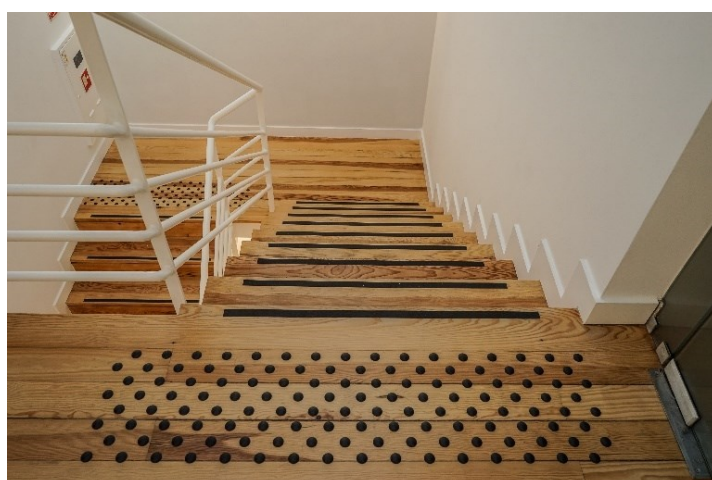
In front of the sofas, 5 book-shaped panels give us explanations about each of these heteronyms.



The last space on this floor is a room full of mirrors, where a low, rhythmic sound can be heard. It can cause discomfort and disorientation.



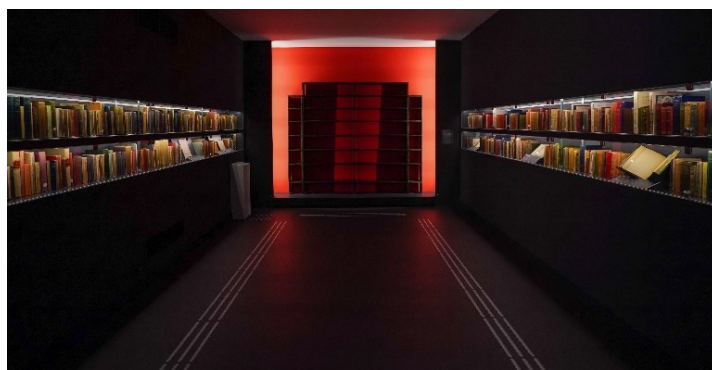
When we finish visiting floor 3, we go down to floor 2. We can go down the stairs (2 flights) or by elevator.



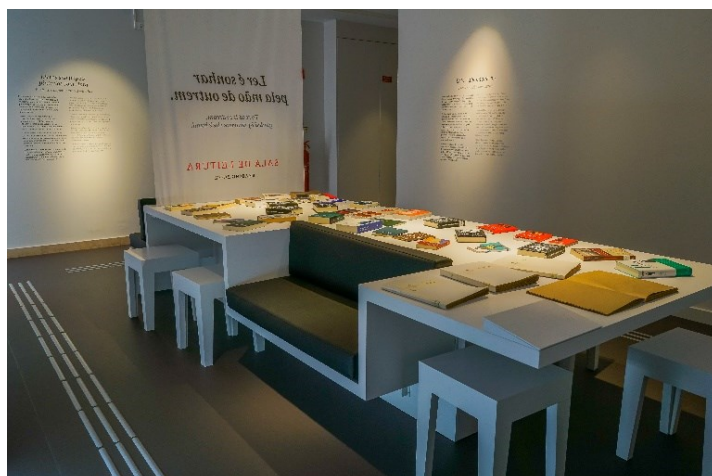
Floor 2 is called Private Library and is divided into three rooms.



The central room is Fernando Pessoa's Private Library. To the right and left we have two wings with Pessoa's books. There is a bookcase at the back. This room is a bit darker than the other areas of the exhibition.



On the right side we find the Reading Room: a table with books to read and browse at your leisure.



When we finish visiting floor 2, we go down to floor 1. We can go down the stairs (2 flights) or by elevator.



Floor 1 is called Apartment. If we enter this floor by the stairs, we should enter the room and follow the corridor to the right. On this floor, the chimes of a clock strike upon each new hour.



Drawn on the floor, we see an approximation to the plan of the apartment, as well as the names of the house's rooms. A large piece of furniture in the centre of the room lets us see various objects, in showcases and drawers that open on three of its sides. There is also a touch screen and headphones where you can see/listen to an interview.



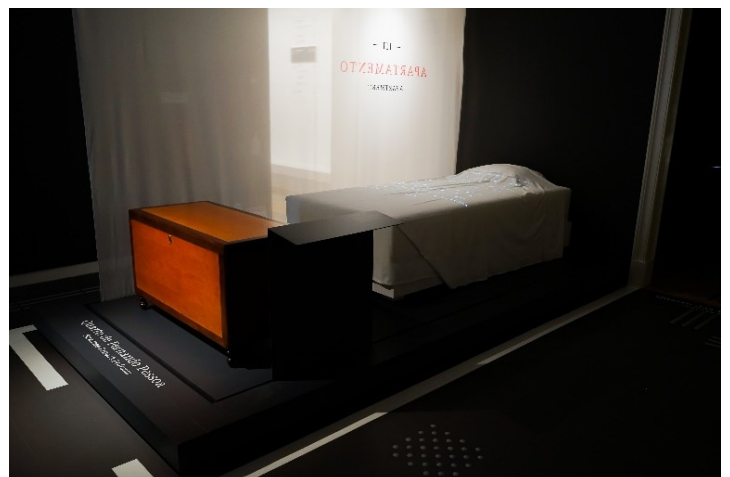
On the wall in the background several picture frames are affixed.



Continuing into the "bedrooms" area, on the right side, we pass a touch screen and a set of colourful magazine cover images.



On the left side, there is a wooden chest and a bed. We cannot touch them.



We reach the penultimate room of the exhibition. On the floor we can read "children's bedroom". This room and the next one are full of scribbled and cluttered A4 sheets. They are purposely messy and are not to be touched.

As we enter, we hear sounds of footsteps, boats, a person writing. →



In the last room, at the centre, we can see a display case, with hanging letters above it.



We leave this floor by opening the shut "office" curtain.



When we finish visiting floor 1, the exhibition is over. We go down to floor 0 where the ticket office and the exit are. We can go down the stairs (2 flights) or by elevator.



At the end of the visit, we should leave the museum the same way we entered, through the door at the end of the ticket office, then through the automatic door, and through the tunnel on the left.

